

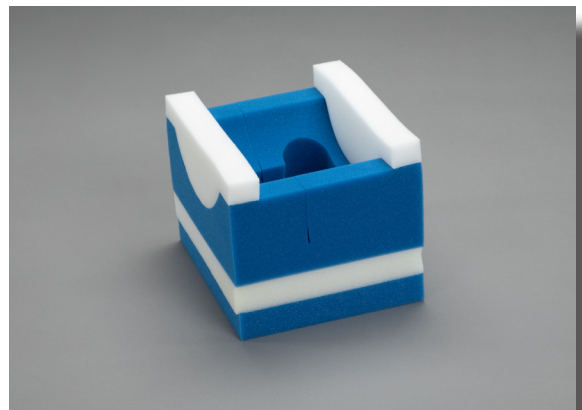


UNIVERSAL SUPINE/PRONE POSITIONING PILLOW

- ▶ Properly aligns cervical spine in prone position.
- ▶ Use for induction and positioning prone. Adjustable with easy tear-away layers.
- ▶ Soft foam provides support and comfort.
- ▶ Combines the supine induction head cradle and the prone pillow in a single positioner.
- ▶ Trach slits on BOTH sides of the positioner.

UPSP100

US Patent # 9,138,087



Dimensions:

9" x 8" x 6.5"

(Height adjusts from 4" to 6.5")

Case Pack: 10



Providing a Better Way

The bottom two layers can be removed so the pillow can be used in the supine position for induction. This all-in-one characteristic replaces the need for two pillows, and provides cost savings to both hospital and patient.

Instructions for Use

Key issues when positioning patients prone are maintaining a neutral cervical spine, and protecting the face and eyes. Prime Medical's Universal Prone Positioning Pillow addresses both of these. This two-part adjustable pillow allows the Anesthesia Provider to adjust the height of the pillow to accommodate patients of different sizes, as well as the use of varying chest support systems.

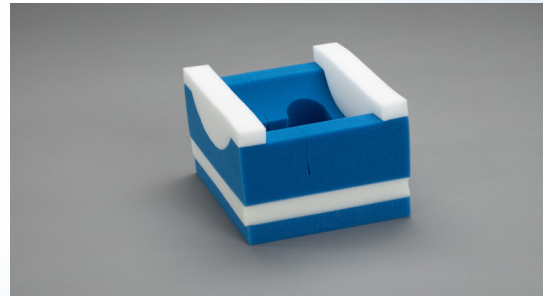


The ability to decrease the height of the pillow prevents hyper extension of the cervical spine when less bulky chest positioning systems are required. The firm base provides a stable, reliable platform while the soft inserts protect the face and eyes from pressure-related injuries.

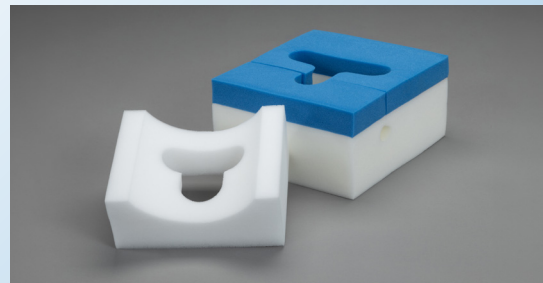
Not made with natural rubber latex



Now one pillow....



...does the job of two.



Cost Savings

The bottom two layers can be removed so the pillow can be used in the supine position for induction. This all-in-one characteristic replaces the need for two separate pillows, thus providing cost savings to both the hospital and patient.

Convenient
adjustment
of height with
two tear away
layers.

