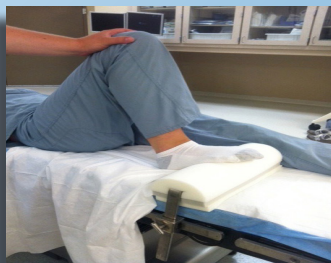




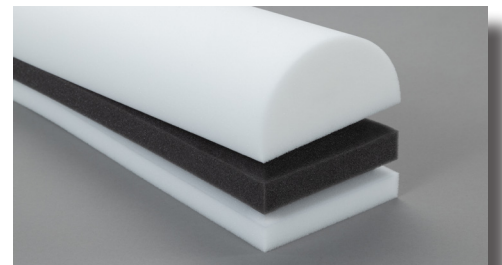
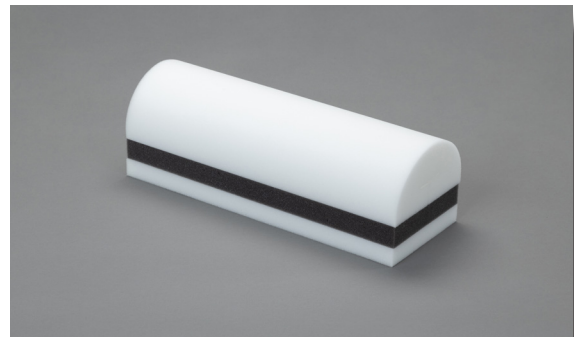
UNIVERSAL AXILLARY/POSITIONING ROLL

- ▶ Unique, adjustable single-patient-use foam positioner for a wide variety of surgical applications.
- ▶ Eliminates risk of cross-contamination and dermatological reaction to cleaning residue.
- ▶ Provides a superior alternative to rolled towels, bandages, blankets, sheets, I.V. bags, etc.
- ▶ Density of foam provides support with reduced risk of pressure-related tissue injury.
- ▶ Texture of foam decreases patient slippage.
- ▶ Flat bottom increases stability.
- ▶ Removable layers provide adjustability.
- ▶ Slot in the side will accommodate a 90-degree angle iron that can attach to a table rail clamp for added stability during knee procedures.



AAR100

US Patent # 9,161,642



Case Pack: 10

Dimensions:

12.5" long x 4.3" wide x 4.7" high
(0.8" tear-away layers)



Providing a Better Way

Consistency and standardization are the keys to patient safety when positioning patients for surgical procedures. Prime Medical's Universal Axillary/Positioning Roll safely and reliably supports the patient in multiple positions, bringing standardization to positioning for a wide variety of surgical procedures.

The design, density and texture of the foam provide stability and support, while the removable bottom layers allow the clinician to adapt the AAR100 to the patient and procedure. Use of the AAR100 eliminates the need for rolled towels, blankets, I.V. bags, etc., which are not positioning devices, or gel rolls which require cleaning between surgical cases.

Because the AAR100 is single-patient-use, the risk of cross-contamination from reusable positioners is eliminated. So, too, is the risk of a dermatological reaction to a cleaning solution residue. By removing the need for a cleaning protocol, patient safety is enhanced and OR time is saved.

The AAR100 is your consistent, safe and universal surgical positioning solution.

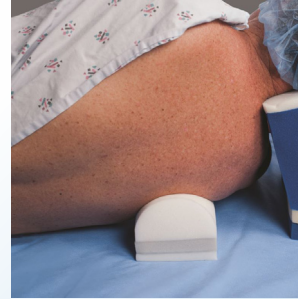


Horizontal Scapular Roll: Neck surgery - thyroidectomy, parathyroidectomy, radical neck dissection, internal jugular vein central line placement.

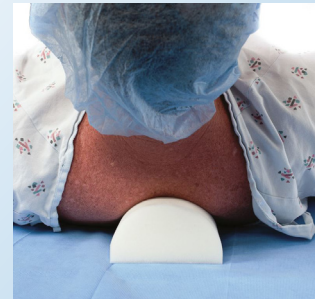
Not made with natural rubber latex



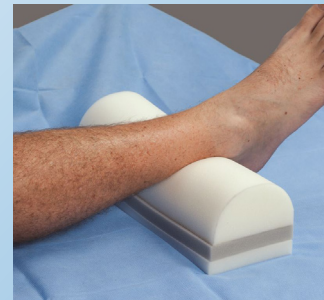
Application Examples



Axillary Roll: Lateral positioning - CV/thoracic, orthopaedic, nephrectomy



Vertical Scapular Roll: Median sternotomy; Subclavian central line placement



Foot/Ankle Prop: Podiatric surgery



Left Lateral Tilt: Cesarean section